

H.E.M.T.

Heavy Equipment Maintenance
& Trading CO.LLC

A TASNEEA COMPANY



One-Stop Shop

Solutions for

OIL & Gas

DESIGN  MANUFACTURE  MAINTAIN



DESIGN | MANUFACTURE | MAINTAIN

INTRODUCTION

Heavy Equipment Maintenance & Trading (H.E.M.T) is an Advanced and Comprehensive set-up that offers a 'ONE STOP SHOP' for Design, Manufacturing, Repair, and Refurbishment of all mechanical and processing equipment and products, and services mainly for Oil & Gas and Petro Chemical Industries.

H.E.M.T workshop is located in NIZWA industrial Estate about 150 km from Muscat and represents a investment in engineering facilities, machine tooling, and specialized equipment. After considerable investment in talent, energy, and time, H.E.M.T developed its Quality Management System to confirm the company's vision for improved over-all performance reflected in high quality products and services, customer satisfaction, and competitive edge.



OUR VISION

To become the market leader in technically differentiated products and reliable advanced services, setting local and global standards through innovation and customer support.



OUR POLICY

To provide products & services to meet the requirements of relevant National & International standards & fulfill a quality and timely delivery to our customers.



OUR VALUES:

- Product Innovation
- Solution Orientation
- Commitment To Service
- Quality, Reliability, & Service
- Ethics And Compliance
- Professional Growth



OUR PROMISE:

- Innovative solutions
- Technology Leadership
- Product Reliability
- Customer Support Excellence

DESIGN | MANUFACTURE | MAINTAIN

OUR ACHIEVEMENTS



H.E.M.T is the first company in Oman to manufacture a trailer mounted 10,000 psi Stimulation Pumping Units, with significant improvements in design through innovation and ease of use which ultimately renders more user friendly environment and less maintenance intensive.



H.E.M.T took the lead in introducing Hybrid Flush-by Units that are now capable of pulling tubular in addition to regular well services like the running of sucker rods, insert pumps, flushing, and a number of maintenance jobs that would otherwise require a complete work-over hoist. Once again, these units are proving to be extremely valuable assets to the end users, and for sure they will be the benchmark for things to come.



We service all major NOCS, IDC and manufacture different products for different clients. We also provide services to our clients in UAE and Iraq on regular basis, which proves exponential growth of our Company.



H.E.M.T started late in 2013 to manufacture certain parts for a very reputable actuator company in the UK. They have endorsed and embraced our quality products and are currently engaged in dialogue with other British companies to start manufacturing for them.

ICV INITIATIVE

ICV initiative is a wonderful platform towards sustainable industry. The culture has to shift from a consumer and promoter mindset towards developing local knowledge and concreting- in a more proactive approach for manufacturing and elevating the skill levels of the local work force. This business methodology will create a launch pad for people to compete on equal grounds and will definitely create a more needed opportunity for skilled labor.

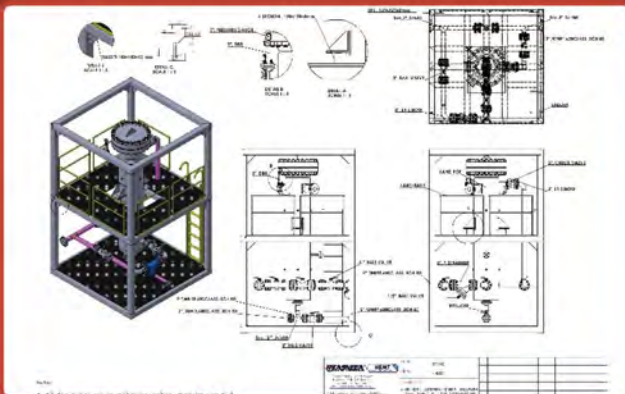
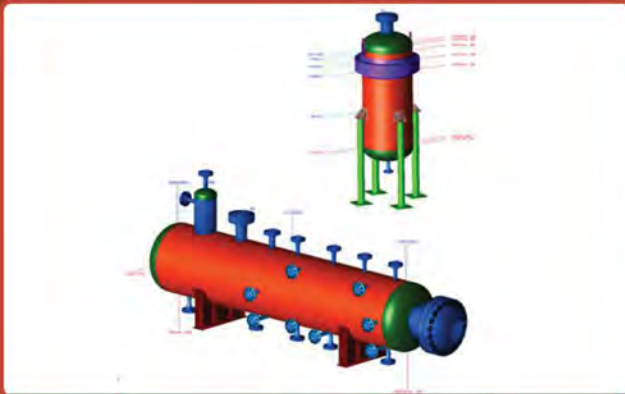
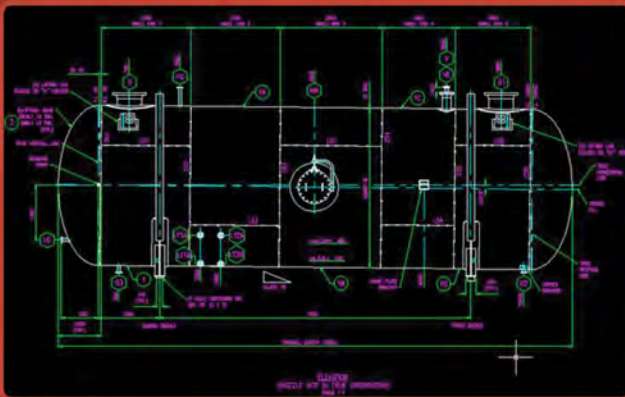
We represent a number of highly recognized international valve companies as an OEM repair center for the Middle East region. H.E.M.T is also in the process of setting up a number of JVs that will see some of these hi-tech valves being manufactured here in Oman. This further affirms our commitment to our core ICV initiatives.

We train our staff at the manufacturing facilities of our partners and henceforth they become OEM approved maintenance and repair technicians. We conduct extensive training for our Employees by offering Courses abroad such as Italy, UK, Malaysia, and Netherlands

DESIGN | MANUFACTURE | MAINTAIN

DESIGN & ENGINEERING

H.E.M.T houses a team of experienced design engineers that deliver quality and innovation to the oil & gas industry. Our engineering expertise extends through the practices, processes and requirements of the industry. It spans production, storage, processing and refining. Additionally, we understand all aspects of industry-specific environmental compliance requirements.



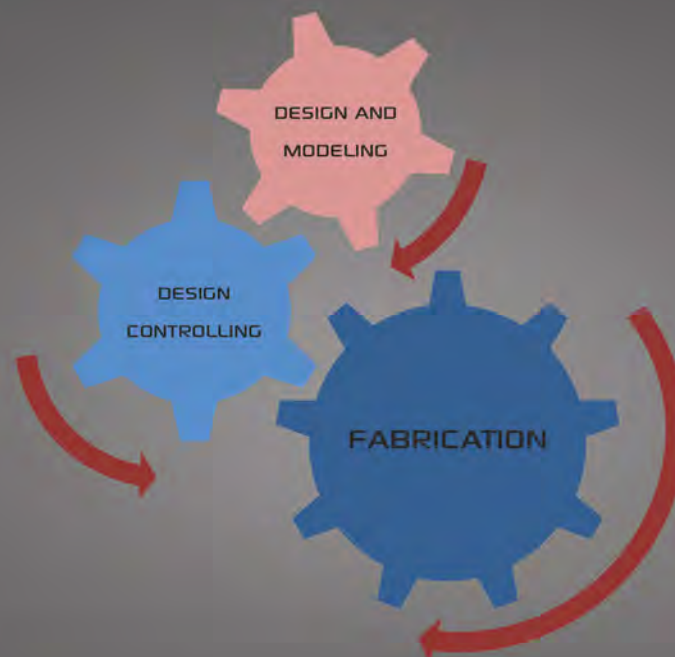
DESIGN | MANUFACTURE | MAINTAIN

FABRICATION

HEMT HAS a fully equipped fabrication facility, capable of carrying out fabrication of various types of Process Equipment such as Pressure Vessels, Heat Exchangers, Separators, Columns and different types of Skids & Manifolds. In addition to Structural Works and Tanks.

Fabrication capabilities include:

- FRACK TANKS
- ACID MIXING TANKS
- SURGE TANKS
- CTD TOWERS
- CEMENT SILOS
- DUST COLLECTOR
- COILED TUBING UNIT
- MUD TANKS
- AUTOMATIC PIPE LOADER
- KNOCK-OUT VESSELS
- GAS SCRUBBERS
- CHEMICAL INJECTION SKID
- PIPE RACKS
- GREASE & OIL PUMP SKID
- SEPARATORS 2/3 PHASE
- CHOKE MANIFOLD 5K, 10K, 15K
- METERING SKID
- WIRE LINE SKID
- BURNER BOOMS
- FLARE STACK
- LANDING BASES



DESIGN | MANUFACTURE | MAINTAIN

FABRICATION



FRAC TANKS



CEMENT SILOS



ACID MIXING TANKS



WATER INJECTION
FILTER MANIFOLDS



CTD TOWER



DIVERTER MANIFOLD



FILTER MANIFOLDS



SUCKER RODS



FLANGED SPOOLS



LANDING BASES



CHEMICAL INJECTION SKIDS



SAND TRAPS

- DESIGNED BY OUR IN-HOUSE DESIGN TEAM
- FULLY MANUFACTURED AT OUR FACILITY
- CUSTOMIZED AS PER CLIENT'S REQUIREMENTS

DESIGN | MANUFACTURE | MAINTAIN

MANUFACTURING OF PRESSURE VESSELS

Design, Fabrication & Repair of PRESSURE VESSELS under ASME "U" & "R" STAMP
Design & Fabrication of High Pressure Vessels as per ASME Section VIII Division II & PD5500

- State-of-the-art workshop facility
- Optimized Assembly Line
- Manufacturing of Separators and Heat Exchangers



Manufacturing of different types of PIPE SUPPORTS



DESIGN | MANUFACTURE | MAINTAIN

MACHINING

Fully equipped MACHINING WORKSHOP to carry out all types of related jobs



DESIGN | MANUFACTURE | MAINTAIN

API PRODUCTS



SPOOLS



FLANGES



STUDED BLOCKS



SELF-REINFORCED NOZZLES



ADAPTER SPOOLS



CROSSOVERS

MACHINING OF:

- Flanges - API/ANSI
- Special valves
- Crossovers
- Swivel Joints
- Any part as per sample

ON-SITE Machining:

- Pipe Cutting
- Milling
- Bolt Tensioning
- Valve machining
- Flange Facing

DESIGN | MANUFACTURE | MAINTAIN

REPAIR & REFURBISHMENT

VALVES & PUMPS

HEMT has an approved PIBIVIESSE, DHV & CNV valve repair shop. We undertake repair of all types of valves, Pumps, and overhauling of transmissions. HEMT is also approved OEM Repair and service center for:



HYDRO TEST PUMP



PRESSURE TESTING



ESD BALL VALVE



HIGH PRESSURE HYDRO
TEST PUMP



On-Site Valve Repair

- Repair and testing of all types API 6A and 6D valves.
- Repair, reconditioning & calibration of control valves.
- Repair & testing of all types of pumps.
- Repair & overhauling of all type of engines
- Repair & overhauling of all type of transmissions.
- Calibration of safety & relief valves.
- Reconditioning of side pocket mandrels
- Re-certification of plug valves, swivel joints, TEES, crosses, cross over's etc.
- Shut down Maintenance
- Preventive Maintenance
- Routine Maintenance
- High-pressure Maintenance

DESIGN | MANUFACTURE | MAINTAIN

VALVE MANUFACTURING

With its new workshop in Nizwa, H.E.M.T will be capable of manufacturing different types of Valves:



Choke Valves



Check Valves



Ball Valves



Forged Steel Valves



Gate Valves

UNDER THE FOLLOWING CERTIFICATIONS

- API 6A – Specification for Wellhead and Christmas Tree Equipments
- API 6D – Specification for Pipeline Valves
- API 16A – Specification for Drill Through Equipment
- API 16C – Specification for Choke and kill Systems

DESIGN | MANUFACTURE | MAINTAIN

RIG MAINTENANCE

HEMT has the required certification and Manpower to repair, refurbish and service On-shore/Off-shore Drilling Rigs and related equipment



DESIGN | MANUFACTURE | MAINTAIN

SAND MANAGEMENT SYSTEMS

used to remove sand, Frac balls and other solid particles from high pressure and high yield gas well effluent to prevent erosion of downstream equipment. Typical application for the unit includes completion cleanups, maximum sand-free rate tests, gas well production, testing and sand control after well fracturing. SMS (sand trap) is typically located after wellhead assembly.

FEATURES :

- Engineered and fabricated at our API, ISO facility in Nizwa
- Designed and engineered locally
- Modular Design- Smallest foot print ever (50m2)
- Able to handle large amounts of solids, more than 2000 kg/ SAND TRAP at a time.
- Wider operating envelope, fluid mix, slurry density, volumes etc.
- Designed with efficiency improvements, easier rig up and HSE exposure reduction.
- Continuity of operations by minimizing interruption to flowing well.
- SAND TRAPS are Trailer Mounted Equipment which when used in series with sand filters can capture more than 99% solids.
- Takes less than 3 hours to spot and rig up.
- Allows "clip-on" well testing (separator or MPFM).
- Can handle 3 MMSCFD of gas with 2,500 cubic meters of fluids.



STIMULATION/CEMENTING UNITS

Trailer-mounted (MOBILE). Used for performing high-pressure well service treatments.

- Typical Operations Include:
 - Solvent Pumping
 - Well Acidizing Treatments
 - Pressure Testing
 - Hydro jet Perforating
 - Miscellaneous Fluid Pumping at large density range

The high-pressure pumping system consists of two diesel engines, two power-shift transmissions, and two triplex pumps.



DESIGN | MANUFACTURE | MAINTAIN

MOBILE WORKSHOP

Container Workshop for complete on-site valve maintenance. This will provide an efficient solution to do valve refurbishment by cutting down on both time and cost for transportation.

The workshop is fully equipped with all tool and machinery to conduct refurbishment tasks on the field.



EQUIPMENT LIST

- Pinacho Lathe Machine
- Profi Hydraulic Press with four wheel mounting frame
- Ronfu Drilling and Milling Machine
- Air Compressor
- Hi-Pressure Water Cleaner
- Air driven High-Pressure Pump
- Work Table
- Tool Box
- Mono Rail with Beam
- Euro Style Tool Cabinet

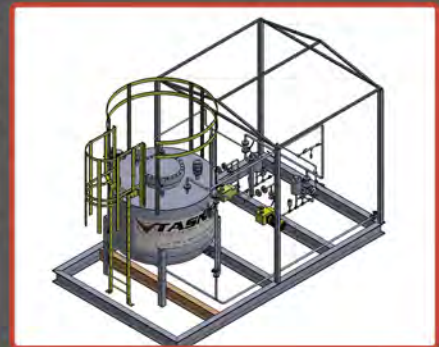


DESIGN | MANUFACTURE | MAINTAIN

CHEMICAL INJECTION SKID PACKAGES

Used in Oil and Gas Industry and serve the purpose of injecting a Precise and Accurate amount of chemical into a system at a required Pressure either continuously or intermittently.

We provide optimum solutions in Chemical Injection Skid (CIS) Packages. We have full capability to offer comprehensive services covering Engineering Design, Fabrication, Inspection, Testing and Commissioning of Chemical Injection Skid Packages.



A typical Chemical Injection Skid Package comprises of:

STRUCTURE

Skid Sizing, Tank Support, Frame Work, Chequered Floor, Rooftop, Hand Rails

TANKS

Pressure Vessels, Storage Tanks, Tote Tanks

MECHANICAL

Rotating Equipment's e.g. Dosing Pumps, Valves, Safety Components etc.

ELECTRICAL

Motor, Local Control Panel, Junction Boxes, Cabling, etc.

INSTRUMENTATION AND CONTROLS

Equipment Sizing and Selection based on Pressure, Level, Flowrate and Temperature instruments and PLC Based Control Systems.

DESIGN | MANUFACTURE | MAINTAIN

OILFIELD STORAGE FRAC TANKS

A Frac Tank is used to hold water or other liquids when a well is being fractured. The material is held in the Frac Tank and connected by a hose or pipeline to a pump that will flow it down the wellbore at a high pressure to push open the formation and the liquid is used to keep it open.

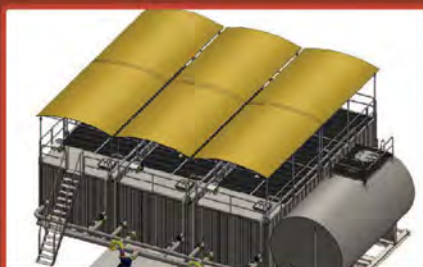


APPLICATION AND FEATURES

- On-site storage of water and other liquids.
- In conjunction with pumps, filters, dewatering units and vacuum boxes.
- Large Oil -Field cleanup operations.
- Can hold up to 21,000 gallons of liquid.
- Multiple valves for easy access to various pumping operations.

MUD TANK SYSTEM

The mud tank plays a critical role in mechanically removing destructive solids and sediment from coastal land and offshore drilling systems, Tasneea proprietary Mud Tanks are designed to assist with proper solids control.



DESIGN | MANUFACTURE | MAINTAIN

PRODUCTION & TEST SEPARATORS

Used to efficiently separate the well effluent into three constituents: Gas, Oil, and Water, (and Sand in case of 4-Phase) to enable these processed fluids to be individually measured and directed for Collection, Burning/Flaring, or Controlled Disposal, depending on the application.



APPLICATION AND FEATURES

- Offshore & Land Operations
- Drillstem Testing
- Well Cleanups
- Production / Well Testing
- Early-Production Facilities

H.E.M.T. will be fully capable of Designing and Manufacturing Optimized 2-Phase, 3-Phase and 4-Phase Production and Well Test Separators either in Horizontal or Vertical Design.



DESIGN | MANUFACTURE | MAINTAIN

SERVICES

WELDING

Qualified and Certified WELDERS to carry out on-site jobs

- Shielded Metal Arc Welding (SMAW) "stick welding"
- Gas tungsten arc welding (GTAW)
- Gas metal arc welding (GMAW)
- Flux-cored arc welding (FCAW or FCA)
- Submerged arc welding (SAW)
- ASME Standard (5G,6G) @ P1, P4, & P8



BLASTING & PAINTING

- BLAST CLEANING & PAINTING ACCORDING TO INTERNATIONAL STANDARDS
- COMPLIES TO HSE REGULATIONS
- QUALIFIED BLASTERS & PAINTERS



DESIGN | MANUFACTURE | MAINTAIN

SPECIAL COATING

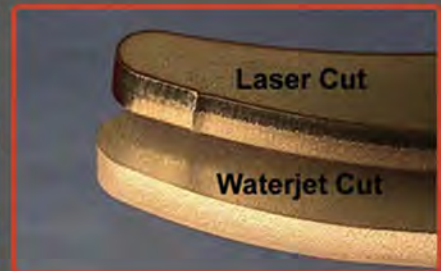
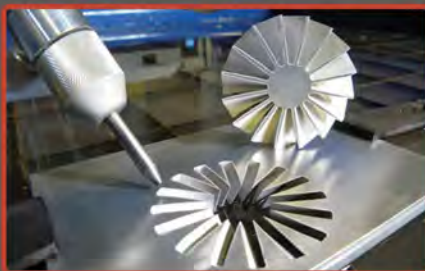
To increase resistance to high temperature, corrosion, and abrasion

- Internal 2 coat and 3 coat system for water tank and diesel tank
- Internal High Abrasion Coating – Ceramic
- Internal Glass Flake Coating
- Inconel 625 Overlay
- Electric Arc Spray
- GRE coating
- SS Overlay



Water-Jet Material Cutting

- Cutting through virtually any material (metals, exotic metals, plastic, glass, wood, stones, tiles, etc.) with various thickness depending on material
- No melting, material deformation or change in properties typically caused by heat
- No hardening of material along cut edges
- No heat affected zone
- Quick cutting with water pressurized up to 87,000 PSI
- Highly accurate and precise with a tolerance of 0.004 inches



DESIGN | MANUFACTURE | MAINTAIN

CERTIFICATION

- API-6A: Manufacture of Cross-Overs, Adaptors & Spacer Spools, Flanged & Threaded Connectors.
- API-6D: Manufacturing of Gate Valves, Plug Valves, and Ball Valves.
- API-16C: Flexible Choke & Kill Lines, Rigid Chokes & kill Lines, Swivel Joints, Choke & Kill Manifold.
- API – 16A: Drilling Spools, Adapters, Loose Connections, Clamps.
- API & DNV: ISO 9001:2008 Quality Management System.
- API 8C : Hoisting Sheaves, Travelling Blocks and Hook Blocks, Drilling Hooks, Rotary Swivels, Power Swivels, Kelly Spinners...
- API 4F: Crown Block Assemblies, Sub Structures at PSL1 and 2.
- API 7K: Rotary Tables, Rotary Bushings, Rotary Slips, Slump Pump Components, Draw Work Components.
- ASME "U" & "R" STAMP: Manufacturing & Repair of pressure vessels.



DESIGN | MANUFACTURE | MAINTAIN

Health, Safety, Security & Environmental (HSSE)

High Professional Standards Are Important To Us...

H.E.M.T is committed to managing its operations and activities in a safe and responsible manner with due to the safety, health, and security of our employees, affiliates, and the environment in which we conduct our business. We strive to maintain a safe working environment for our employees, contractors and the communities in which we operate. We are committed to the HSSE goals of:

- Avoiding injuries to all personnel involved in, or affected by our operations.
- Committing to our responsibility towards a cleaner environment and minimizing the impact of our operations on it.
- Compliance to the legal and regulatory boundaries where we operate
- Improving our HSSE performance

How do we meet these commitments?

- Monitor HSSE risk through a developed management system that ensures compliance to regulations and applicable standards
- Engage with our contractors and suppliers to ensure they understand our HSSE expectations.
- Identify, evaluate and record HSSE risks through the operation of facilities and implementation of activates.
- Maintain emergency response procedures and resources and perform regulatory test to reduce the impact of an incident.
- Review the effectiveness of this policy and the management system through periodic audits.
- Include HSSE performance objectives in employee and contractor evaluation.
- Maintain a hazard free working environment to eliminate the cause of injury or damage.



DESIGN | MANUFACTURE | MAINTAIN



DESIGN | MANUFACTURE | MAINTAIN

OUR CLIENTS



H.E.M.T.

Heavy Equipment Maintenance
& Trading CO.LLC

A TASNEEA COMPANY



A benchmark in everything we do.
شركة لتسبب مخدمات تكنولوجيا النفط و الغاز على م
Tasneea Oil and Gas Technology LLC

T: (+968) 24390953 | M: (+968) 99171383 | E: info@tasneea-int.com